



Programming Circuit Boards

This document was created to help you program the circuit board based on what channels will be wired in.

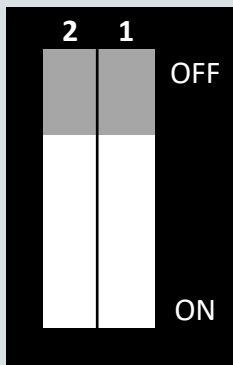
All of the CB006 Rev J circuit boards will have a dip switch on them that is used to set the board. The dip switch has two switches on it, 1 and 2. The switches each have two settings, ON and OFF.

You will need to power cycle the board for any changes made to take effect.

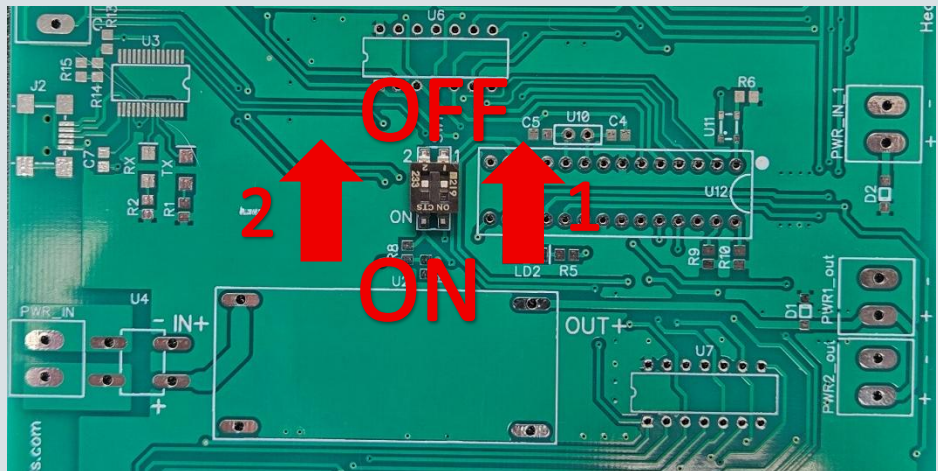
Master Board (Channels 1-8)

1: OFF

2: OFF



TC's 1-4

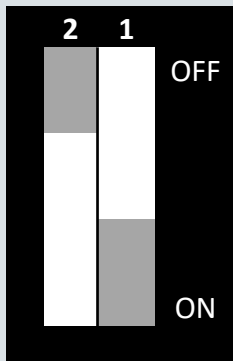


TC's 5-8

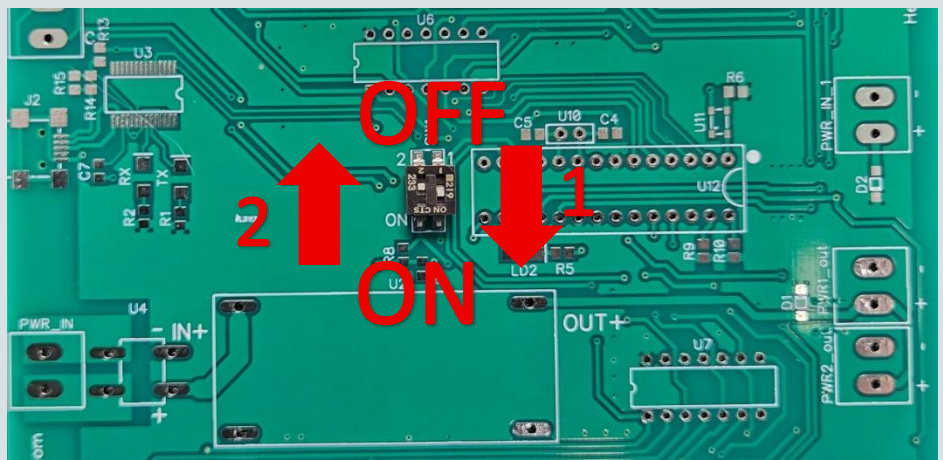
Board #1 (Channels 9-16)

1: ON

2: OFF



TC's 1-4



TC's 5-8



Programming Circuit Boards

Board #2 (Channels 17-24)

1: OFF

2: ON

