



Temperature Recorder Quick Start Guide!



PLEASE NOTE: This manual is currently undergoing updates following the addition of a large update to the features and functions of the HEAT VIEW Computer Application. Any section still currently being reviewed will be tagged with this symbol in the first paragraph the affected section. We are aware of a few visual bugs with some of the settings windows following the update that don't impact the functionality and are currently resolving them. Please <https://heatviewcontrols.com/> check regularly for the updated computer application as well as this manual. We apologize for any inconvenience this may cause.

1. Introduction

The Data View controller is a stand-alone data recorder that will record the temperatures of the Type K thermocouples plugged into it. If the recording light on the box is green then the system will be recording the temperatures and storing them on a database inside the unit.

This document will show you how to connect to it and what all the lights on the unit represent. It will also show you how to get all the data that was recorded on the unit while your computer was not connected.

Essentially with this unit, you can power it up and connect all your thermocouple lines to it and it will record the temperatures. Once you are done, you can simply power it down and take it with you. If you need the data while it was running, connect your computer to it, upload the data you want and then generate a report from it.

2. Thermocouple Connected Lights

The data recorder is equipped with 2 Lights for every thermocouple connection. These are blue and green lights. If the system is powered up and running/recording, then these lights will be active.

- 1) If the system is getting valid readings from the thermocouple, then the light above the connector will turn green
- 2) If the thermocouple is “open” the blue light will be on.
- 3) If there is a problem with the measuring channel, then the blue and green lights will flash rapidly.
- 4) If there is a pattern of flashing lights where there is only 1 or two lights on at a time, then the system is booting up or not running.

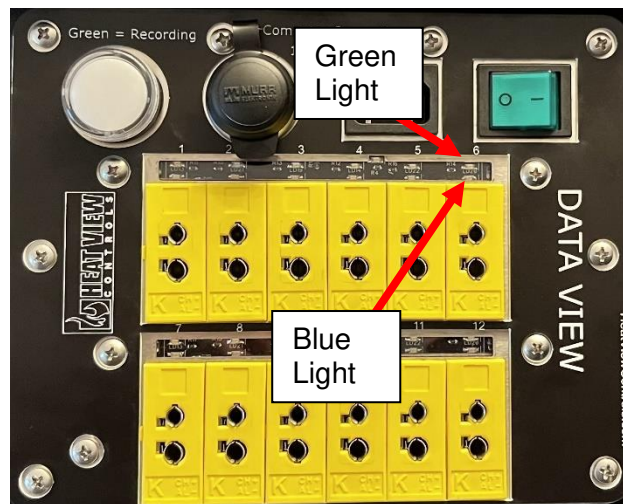


Figure 1: Thermocouple Lights

3. Recording Light

- 1) If the system is powered up and running/recording, then this light will be green.
- 2) If the system is booting up still it will be red. If the system has a fault and it cannot store any data, then this light will turn red.
- 3) If it is off, the unit has no power.

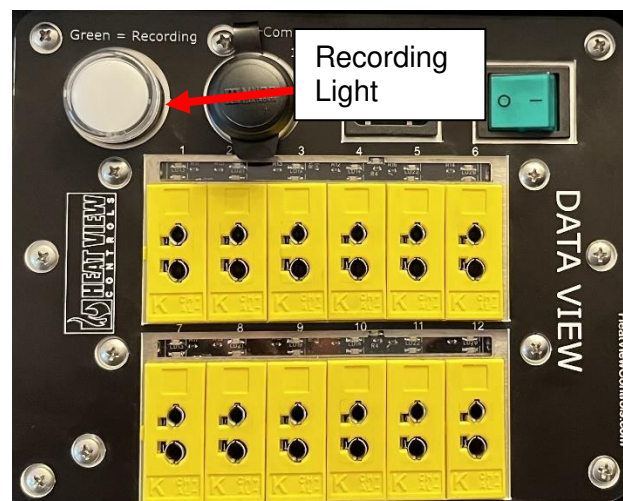


Figure 2: Recording Light

4. Downloading & Installing the Computer Application

There are no special requirements to install the software and you do not need admin privileges. Simply download the software and follow the installation instructions.

5. Connecting to the Data View recorder

To connect and get data from the controller is as simple as connecting to it over ethernet. You do not have to modify your computer to do this in anyway. (If you know what this means “make sure you do not have a static IP address assigned to your Ethernet port” then please make sure it is done.) Follow these steps:

- 1) Power up the unit
- 2) Wait for the recording light to turn green
- 3) Connect to it with your ethernet cable (then wait an extra 30 seconds for it to load all its ethernet drivers)
- 4) The system will auto find the device and connect to it and start logging the data on your computer. The connection indication as pointed out in the image below will turn green to say it is connected.

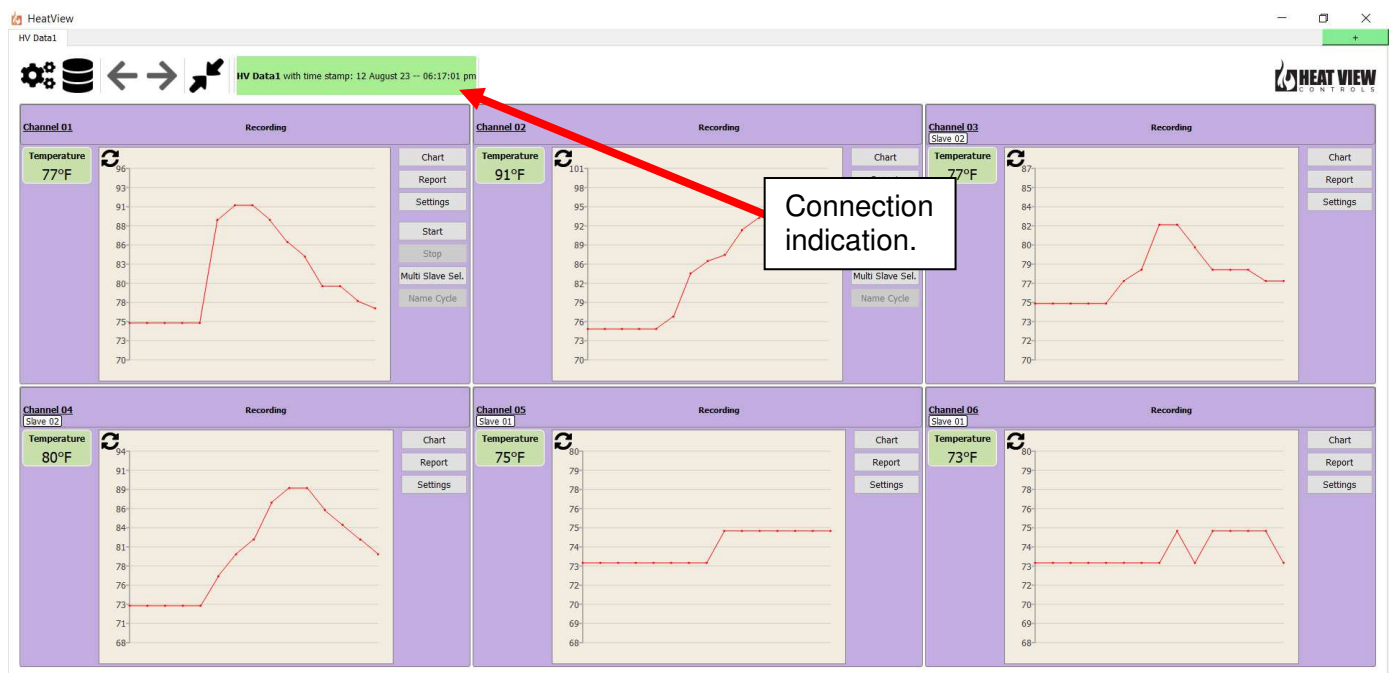


Figure 3: The connection indication rectangle

6. Uploading data stored on the controller.

Uploading data from a recorder, connect to it as discussed in the previous section. Then 1 of 2 situations will occur:

1. This is the first time you are connecting to a controller:

If this is the first time you are connecting to the controller, it will not auto recall the data for you, so you need to manually select which data to upload. To do this follow these steps:

- 1) Click on the Upload Data button shown here:

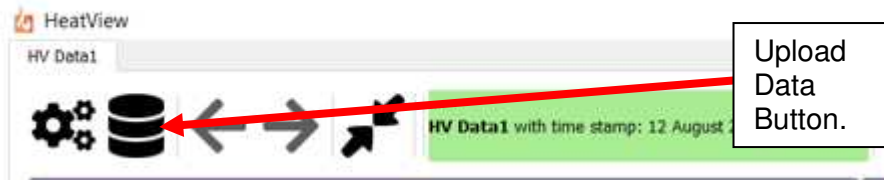
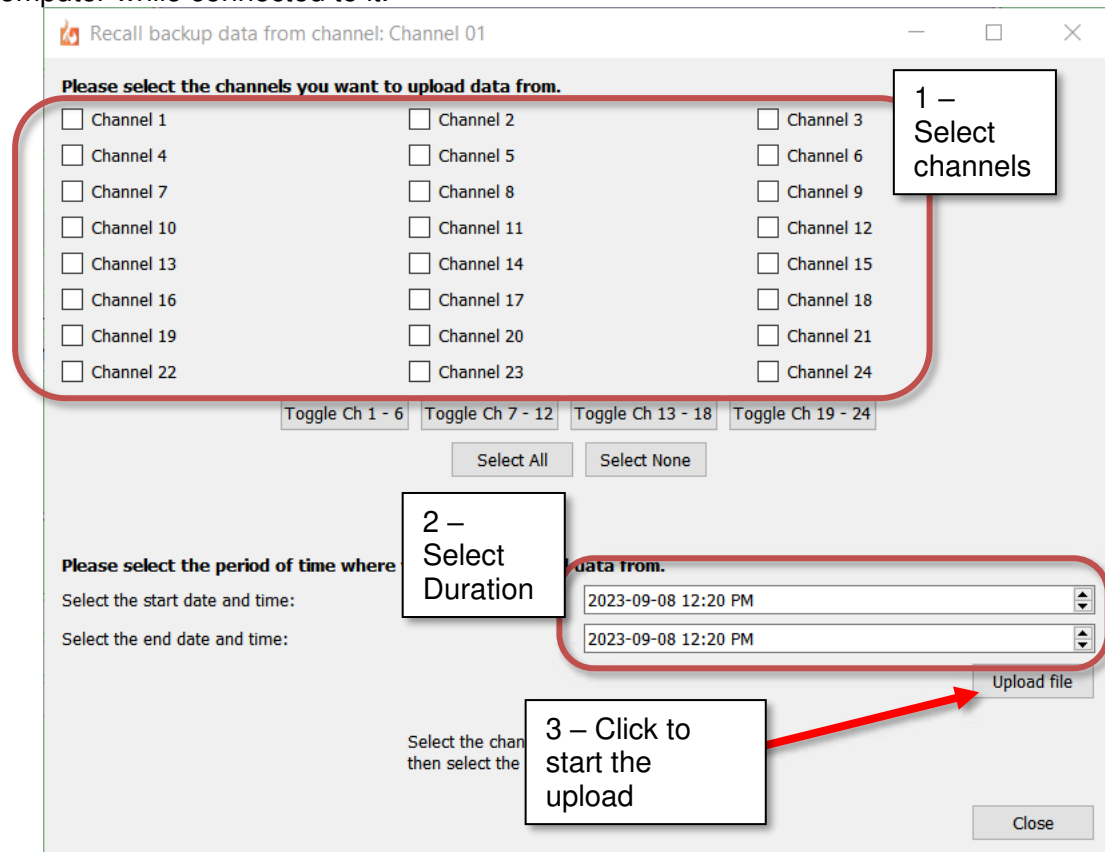


Figure 4: Upload Data Button

- 2) Then in the new Pop-up window (shown below), simply select the channels you want to upload the data for and then select a start and end date and time, then click "Upload File" and let it upload the data.
- 3) It will automatically load all the available data for the time span for all those channels. Once uploaded, it will be part of your local database and treated as data that was recorded on your computer while connected to it.



2. You were connected before and you are reconnecting now:

If you were connected before and you are reconnecting to a controller, then it will show you a message when the connection is established telling you how long it was since you last connected to this controller and how will ask you if you want to upload any of this missing data. Simply click yes and it will upload all the missing data for all the channels.

Otherwise, follow the instructions above to manually upload the data.

will appear. This will allow the user to open a new window to allow you to make more in depth settings changes to the application. The only advanced settings available to you will be the calibration values for the system. The calibration process is covered in more detail later in this manual.